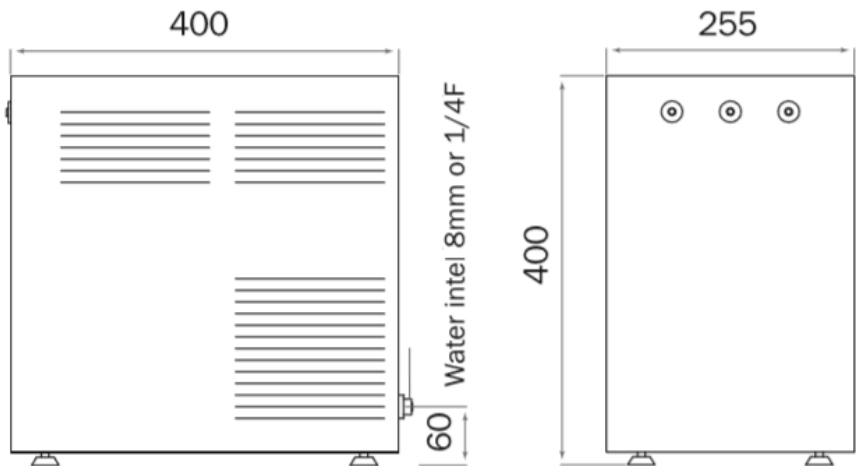
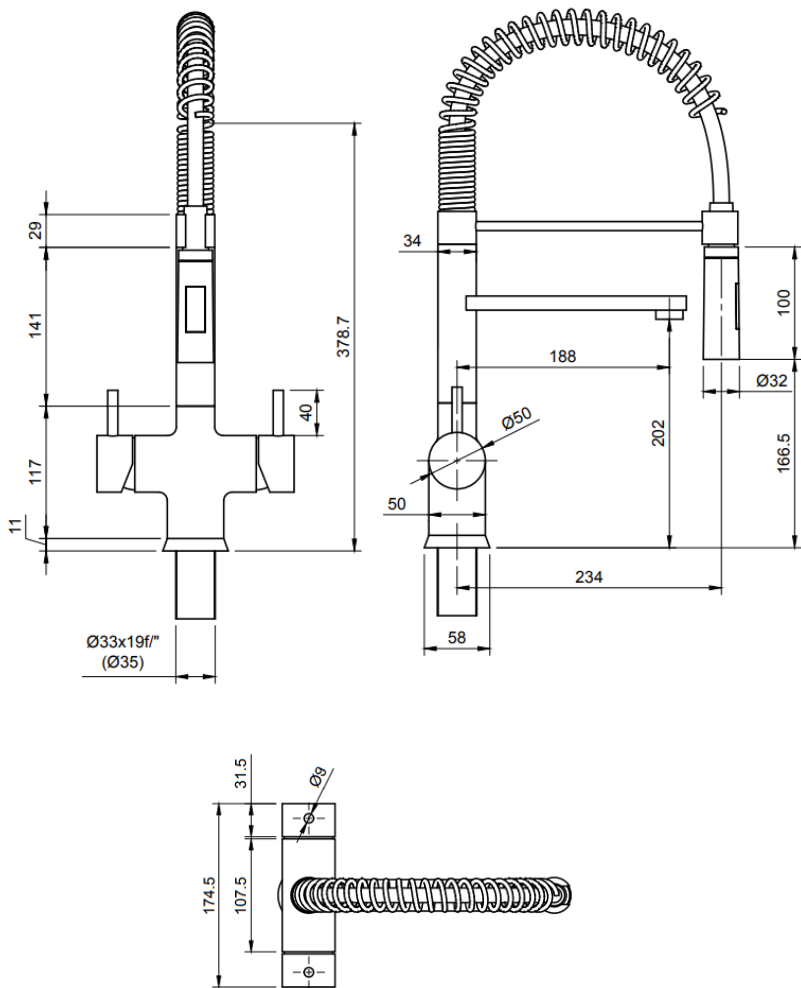


Twin Spring Short 30/45/55

ACWG

AQUALEX



Twin Spring Short 30/45/55

ACWG

AQUALEX

CAPACITEITEN CAPACITIES

| | Per uur Per hour | In continu Continuously |
|---------------------------|---------------------|----------------------------|
| Twin Spring Short 30 ACWG | 30L | 7L* |
| Twin Spring Short 45 ACWG | 45L | 9L* |
| Twin Spring Short 55 ACWG | 55L | 12L* |

Inkomend water 14°C
Incoming water 14°C

*Uitkomend gefilterd water varieert tussen 3-10°C
*Outcoming filtered water varies between 3-10°C

TECHNISCHE INFORMATIE TECHNICAL INFORMATION

| | |
|---|--------------------|
| Werkdruk water MIN-MAX Pressure water MIN-MAX | 2.5 - 4bar |
| Koelgas hoeveelheid Refrigerant gas quantity | R134A 0,120 kg |
| Max. vermogen Max. power | 30/45/55 ACWG:350W |

AFMETINGEN DIMENSIONS

| | l | b | h |
|---|-----|-------|-------|
| Toestel / Device | 400 | 255 | 400 |
| Min. binnenmaten kast* Min. inside dimensions cupboard* | 405 | 275 | 500 |
| Aqualex kraan / Aqualex tap | 234 | 174,5 | 378,7 |

*Voorzien voor verluchting, koolzuurgasfles en filter
*Provide for ventilation, carbon dioxide bottle and filter

TECHNISCHE VOORZIENINGEN TECHNICAL PROVISIONS

| | |
|---|--|
| Stopcontacten Sockets | 1 x 230V |
| Noodzakelijke watertoevoer | 3/4" dubbele dienstkraan met terugslagklep 3/8" schell kraan (koud) 3/8" schell kraan (warm) |
| Necessary water supply | Double service tap with back valve 3/8" schell tap (cold) 3/8" schell tap (hot) |
| Te boren gaten Drill holes | |
| Kraan Tap | Ø35 |
| Gelieve genoeg vrije ruimte te voorzien onder de gaten om de Aqualex kraan/onderdelen vlot te kunnen aansluiten. Please provide enough free space under the drilled holes to ensure that the Aqualex tap/components can be connected easily. | |
| Ventilatie | Bovenaan en onderaan min. opening van 200cm ² (koelkast principe). |
| Ventilation | Top and bottom min. Opening of 200cm ² (refrigerator principle). |