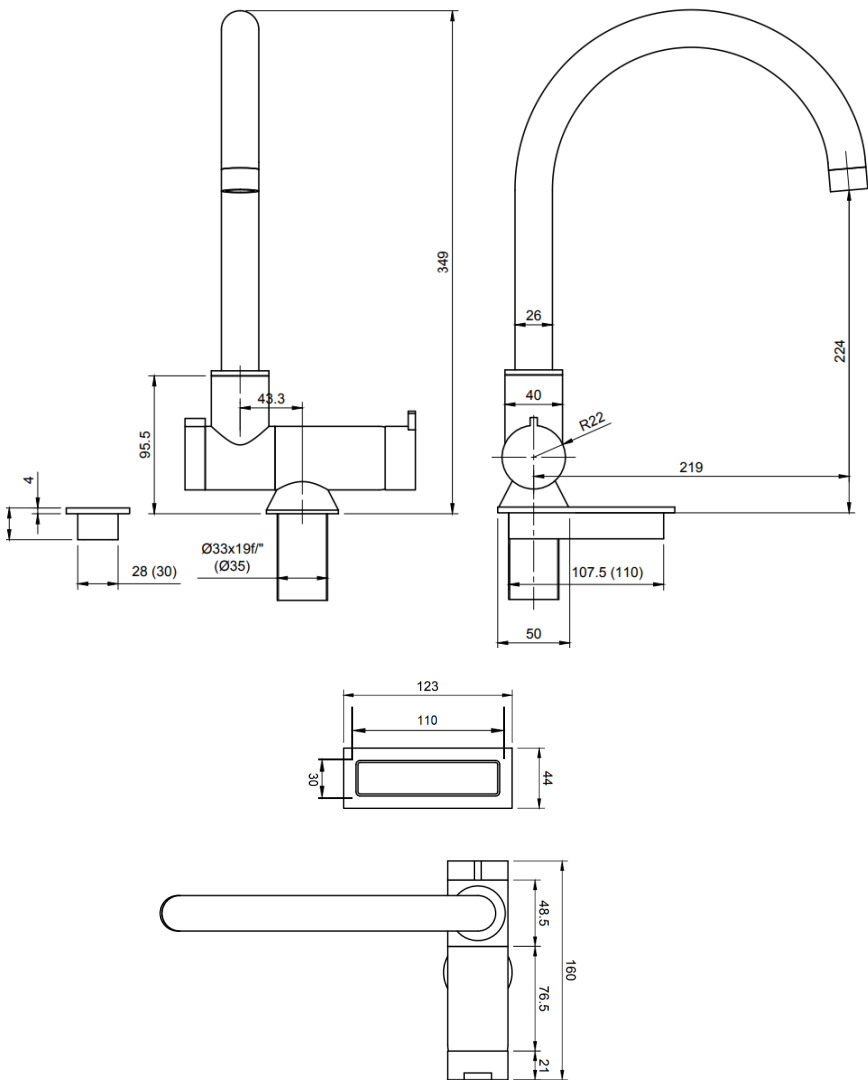


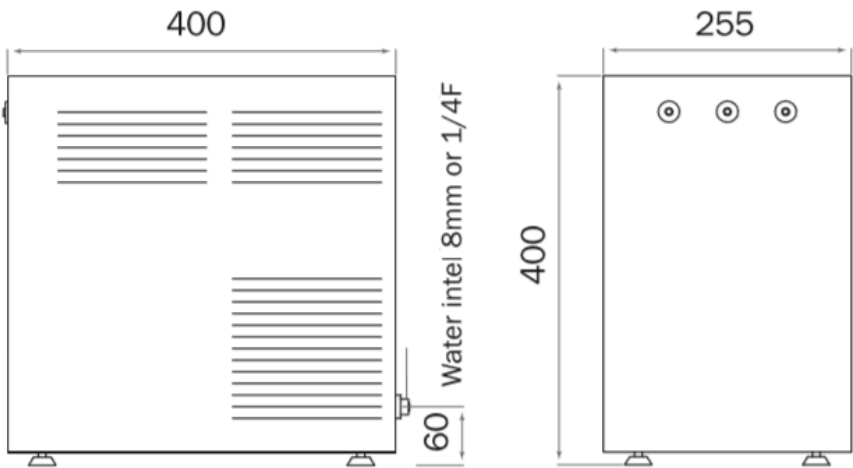
# Twin Flex Touchpad Hot 30/45/55

CHWG

AQUALEX



## Toestel/Device

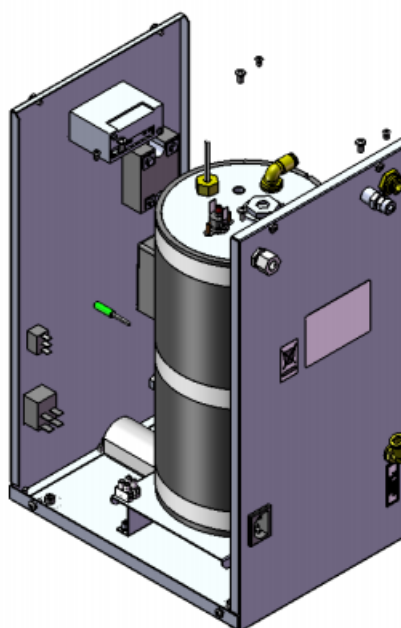
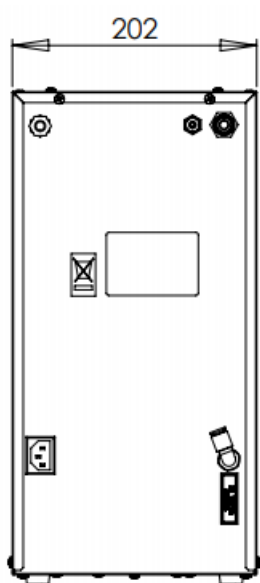
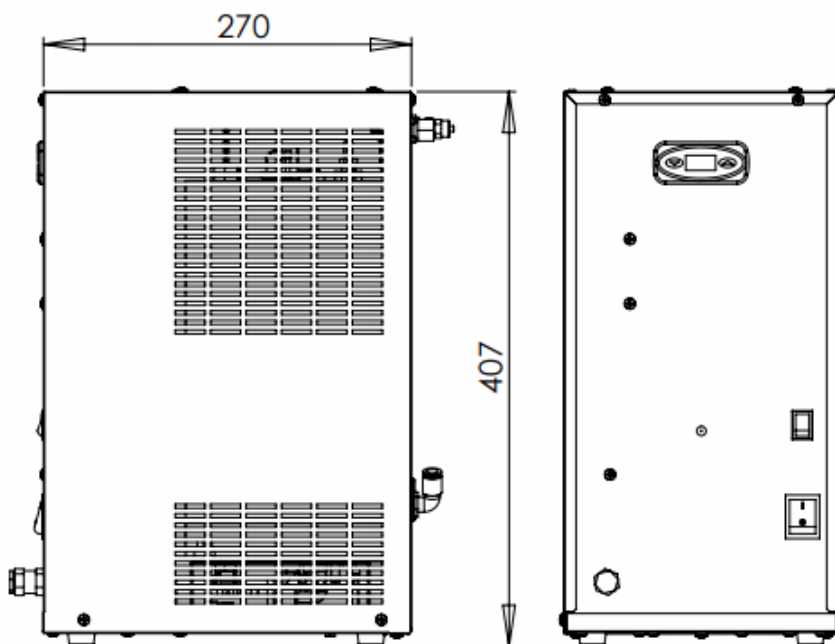
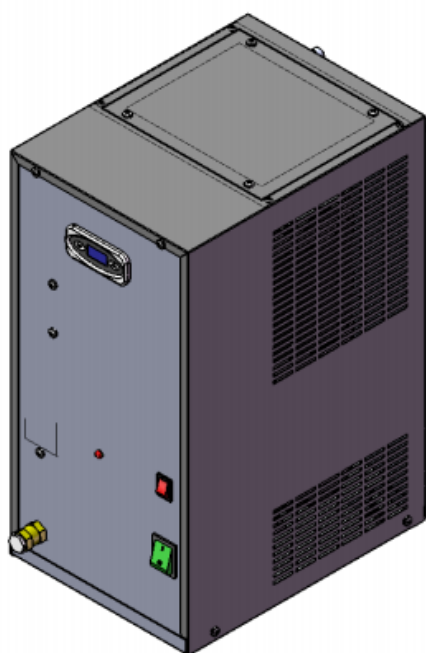


# Twin Flex Touchpad Hot 30/45/55

CHWG

AQUALEX

## Boiler/Boiler



# Twin Flex Touchpad Hot 30/45/55

CHWG

AQUALEX

## CAPACITEITEN CAPACITIES

|                                | Per uur<br>Per hour | In continu<br>Continuously |
|--------------------------------|---------------------|----------------------------|
| Twin Flex Touchpad Hot 30 CHWG | 30L<br>18L          | 7L*<br>3L                  |
| Twin Flex Touchpad Hot 45 CHWG | 45L<br>18L          | 9L*<br>3L                  |
| Twin Flex Touchpad Hot 55 CHWG | 55L<br>18L          | 12L*<br>3L                 |

Inkomend water 14°C  
Incoming water 14°C

\*Uitkomend gefilterd water varieert tussen 3-10°C  
\*Outcoming filtered water varies between 3-10°C

## TECHNISCHE INFORMATIE TECHNICAL INFORMATION

|   |                                      |
|---|--------------------------------------|
| <b>Werkdruk water MIN-MAX</b><br>Pressure water MIN-MAX | 2.5 - 4bar                           |
| <b>Koelgas hoeveelheid</b><br>Refrigerant gas quantity  | R134A 0,120 kg                       |
| <b>Max. vermogen</b><br>Max. power                      | 30/45/55 CHWG: 350W<br>Boiler: 1800W |
| <b>Wall</b>   | Optioneel<br>Optional                |

## AFMETINGEN DIMENSIONS

|   | l   | b   | h   |
|---|-----|-----|-----|
| <b>Toestel / Device</b>   | 400 | 255 | 400 |
| <b>Boiler / Boiler</b>  | 270 | 202 | 407 |
| <b>Min. binnenmaten kast*</b><br>Min. inside dimensions cupboard* | 405 | 480 | 500 |
| <b>Aqualex kraan / Aqualex tap</b>                                | 219 | 160 | 349 |

\*Voorzien voor verluchting, koolzuurfles en filter (indien toestel en boiler naast elkaar staan)

\*Provide for ventilation, carbon dioxide bottle and filter (if device and boiler are placed next to each other)

## TECHNISCHE VOORZIENINGEN TECHNICAL PROVISIONS

|                                   |  |
|-----------------------------------|--|
| <b>Stopcontacten</b><br>Sockets   | 3 x 230V   |
| <b>Noodzakelijke watertoevoer</b> | 3/4" dubbele dienstkraan met terugslagklep<br>3/8" schell kraan (koud)<br>3/8" schell kraan (warm) |
| <b>Necessary water supply</b>     | Double service tap with back valve<br>3/8" schell tap (cold)<br>3/8" schell tap (hot)              |

### Te boren gaten/sleuven Drill holes/grooves

|   |                    |
|---|--------------------|
| <b>Kraan</b><br>Tap                             | Ø35                |
| <b>Ingebouwde touchpad</b><br>Built-in touchpad | 110x30 (LxB)/(LxW) |

Gelieve genoeg vrije ruimte te voorzien onder de gaten om de Aqualex kraan/onderdelen vlot te kunnen aansluiten.

Please provide enough free space under the drilled holes to ensure that the Aqualex tap/components can be connected easily.

|                    |   |
|--------------------|---|
| <b>Ventilatie</b>  | Bovenaan en onderaan min. opening van 200cm <sup>2</sup> (koelkast principe). |
| <b>Ventilation</b> | Top and bottom min. Opening of 200cm <sup>2</sup> (refrigerator principle).   |