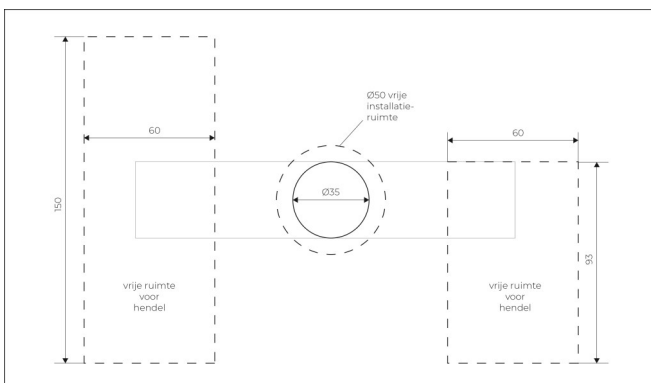
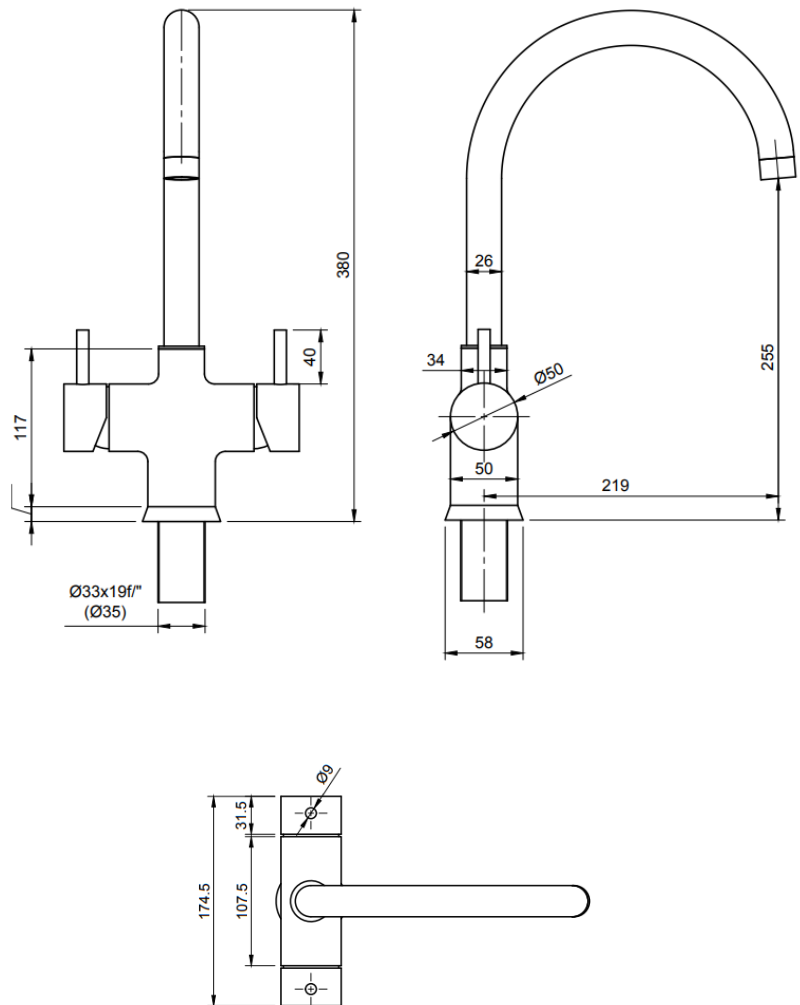


ACWG

A high-quality, polished chrome kitchen faucet. It features a high-arch spout and two side handles for hot and cold water adjustment. The faucet is mounted on a chrome base. The background is white.



TECHNICAL PROVISIONS

Kraan
Tap

Ø35

Please provide enough free space under the drilled holes to ensure that the Aqualex tap/components can be connected easily.

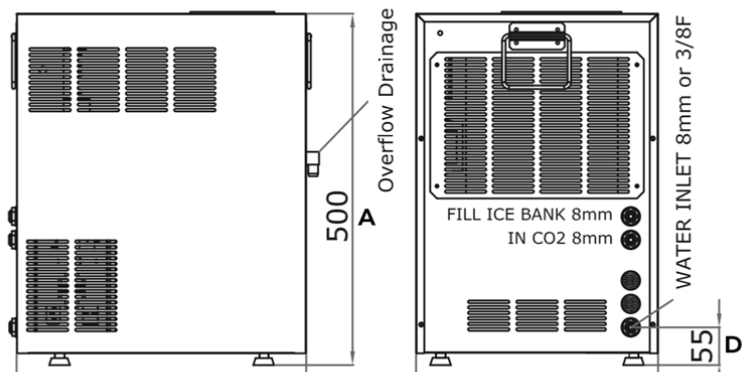
CE



Aqualex 65/120/180 IN

ACWG

AQUALEX



CAPACITEITEN CAPACITIES

AFMETINGEN DIMENSIONS

	Per uur Per hour	In continu Continuously
Aqualex 65 IN ACWG	65L	40L*
Aqualex 120 IN ACWG	120L	70L*
Aqualex 180 IN ACWG	180L	100L*

Inkomend water 14°C
Incoming water 14°C

***Uitkomend gefilterd water varieert tussen 3-10°C**
*Outcoming filtered water varies between 3-10°C

	I	b	h
Toestel / Device			
Aqualex 65 IN ACWG	420	350	500
Aqualex 120 IN ACWG	480	350	500
Aqualex 180 IN ACWG	530	350	500

Min. binnenmaten kast*

Min. inside dimensions cupboard*

Aqualex 65 IN ACWG*	520	500	550
Aqualex 120 IN ACWG*	580	500	550
Aqualex 180 IN ACWG*	630	500	550

***Voorzien voor verluchting, koolzuurgasfles en filter**
*Provide for ventilation, carbon dioxide bottle and filter

TECHNISCHE VOORZIENINGEN TECHNICAL PROVISIONS

TECHNISCHE INFORMATIE TECHNICAL INFORMATION

Stopcontacten Sockets	1 x 230V
Noodzakelijke watertoevoer	3/4" dubbele dienstkraan met terugslagklep 3/8" schell kraan (koud) 3/8" schell kraan (warm)
Necessary water supply	Double service tap with back valve 3/8" schell tap (cold) 3/8" schell tap (hot)
Ventilatie	Bovenaan en onderaan min. opening van 400cm ² (koelkast principe).
Ventilation	Top and bottom min. Opening of 400cm ² (refrigerator principle).

Werkdruk water MIN-MAX Pressure water MIN-MAX	2.5 - 4bar
Koelgas hoeveelheid Refrigerant gas quantity	65: R290 0,160 kg 120: R290 0,250 kg 180: R290 0,390 kg
Max. vermogen Max. power	65 ACWG: 520W 120/180 ACWG: 900W
Lekbak Drip tray	Optioneel (extra fiche) Optional (external sheet)
Bottler	Optioneel Optional
Python	Optioneel Optional