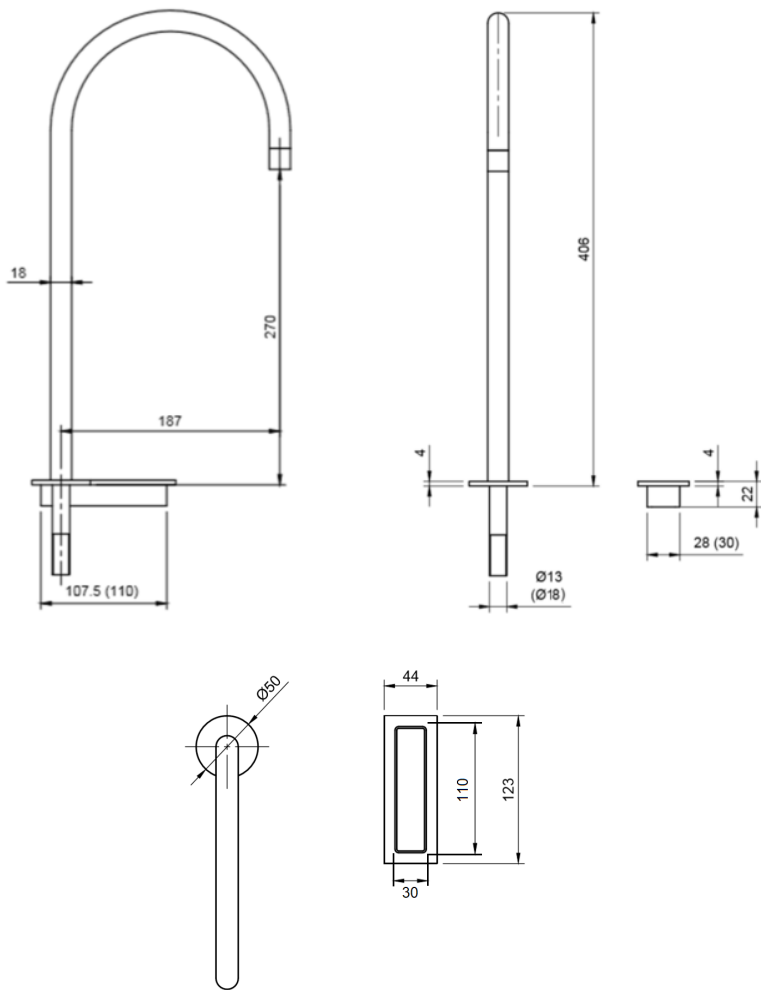


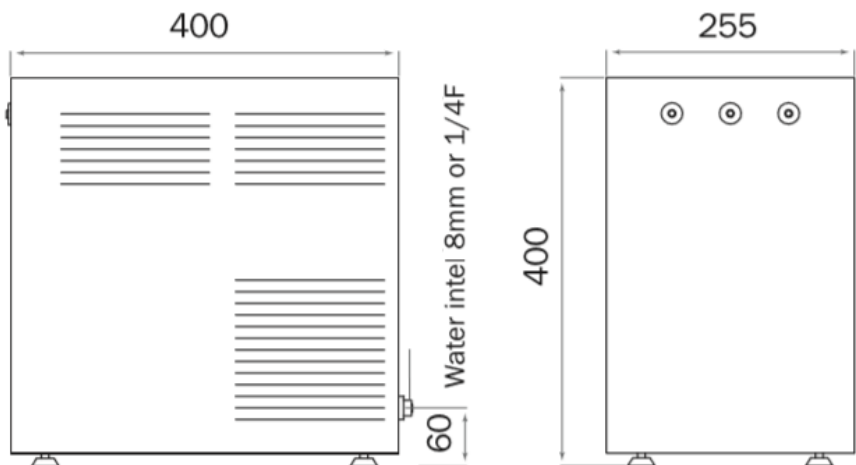
Fine Touchpad Hot 30/45/55

CHWG

AQUALEX



Toestel/Device

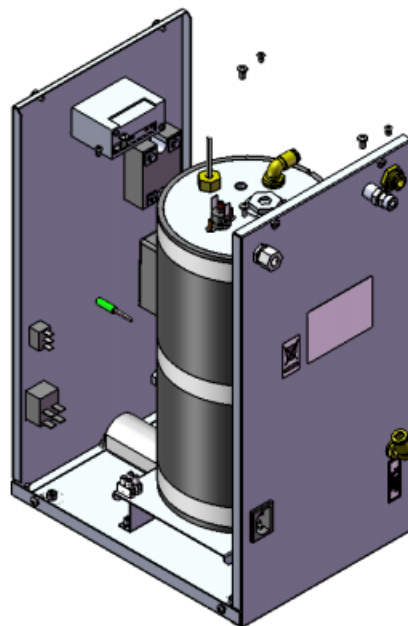
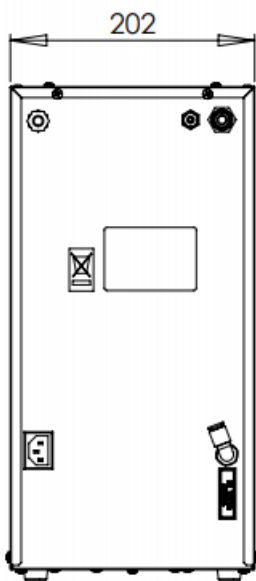
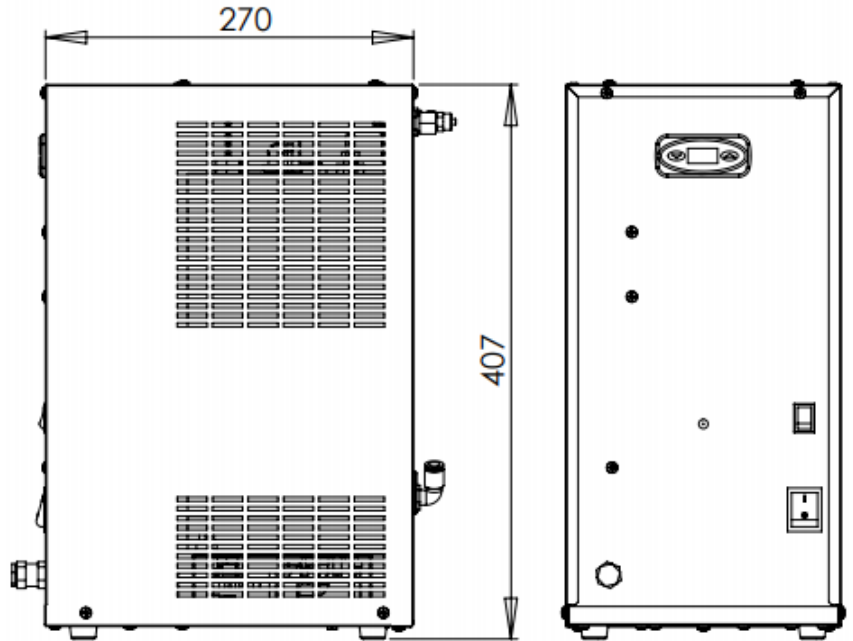
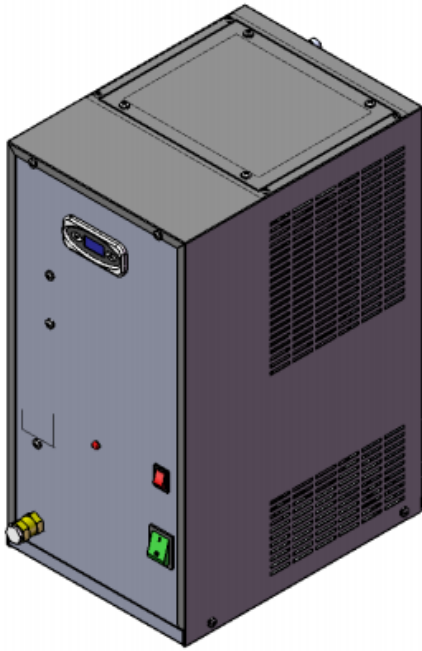


Fine Touchpad Hot 30/45/55

CHWG

AQUALEX

Boiler/Boiler



Fine Touchpad Hot 30/45/55

CHWG

AQUALEX

CAPACITEITEN CAPACITIES

	Per uur Per hour	In continu Continuously
Fine Touchpad Hot 30 CHWG	30L 18L	7L* 3L
Fine Touchpad Hot 45 CHWG	45L 18L	9L* 3L
Fine Touchpad Hot 55 CHWG	55L 18L	12L* 3L

Inkomend water 14°C
Incoming water 14°C

*Uitkomend gefilterd water varieert tussen 3-10°C
*Outcoming filtered water varies between 3-10°C

AFMETINGEN DIMENSIONS

	l	b	h
Toestel* / Device*	400	255	400
Boiler* / Boiler*	270	202	407
Aqualex kraan / Aqualex tap	187	18	406

*5cm rondom het toestel voorzien voor verluchting
*Add 5cm around the device for ventilation

TECHNISCHE INFORMATIE TECHNICAL INFORMATION

Werkdruk water MIN-MAX Pressure water MIN-MAX	2.5 - 4bar
Koelgas hoeveelheid Refrigerant gas quantity	R134A 0,120 kg
Max. vermogen Max. power	30/45/55 CHWG: 350W Boiler: 1800W
Lekbak Drip tray	Optioneel (extra fiche) Optional (external sheet)
Wall	Optioneel Optional

TECHNISCHE VOORZIENINGEN TECHNICAL PROVISIONS

Stopcontacten Sockets	3 x 230V
Noodzakelijke watertoevoer Necessary water supply	3/4" dubbele dienstkraan met terugslagklep Double service tap with back valve
Te boren gaten/sleuven Drill holes/grooves	
Kraan Tap	Ø18
Ingebouwde touchpad Built-in touchpad	110x30 (LxB)/(LxW)

Gelieve genoeg vrije ruimte te voorzien onder de gaten om de Aqualex kraan/onderdelen vlot te kunnen aansluiten.

Please provide enough free space under the drilled holes to ensure that the Aqualex tap/components can be connected easily.

Ventilatie Ventilation	Bovenaan en onderaan min. opening van 200cm ² (koelkast principe). Top and bottom min. Opening of 200cm ² (refrigerator principle).
---------------------------	--------------------------------------------------------------------------------------------------------------------------------------------------------------